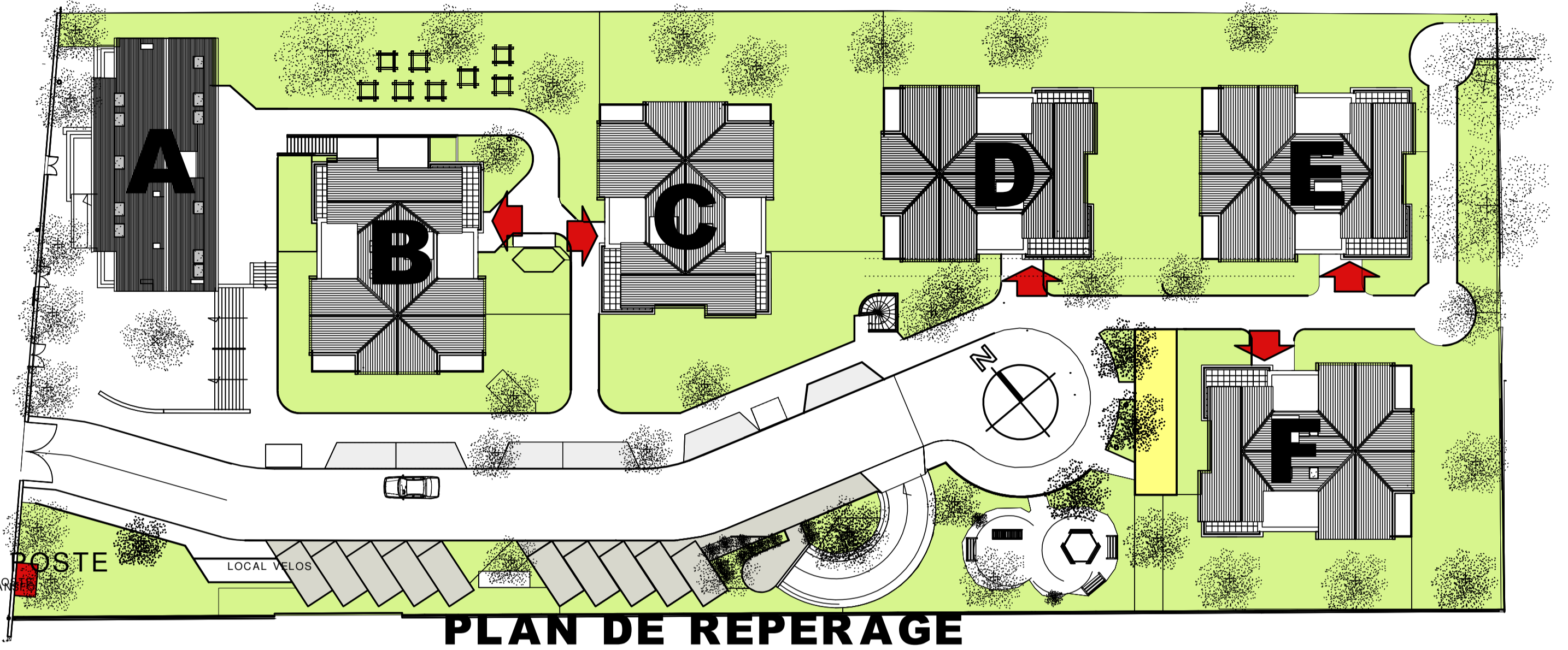


# RESIDENCE " LES CLAIES "

## 15/21, AVENUE PASTEUR - 77410 CLAYE SOUILLY

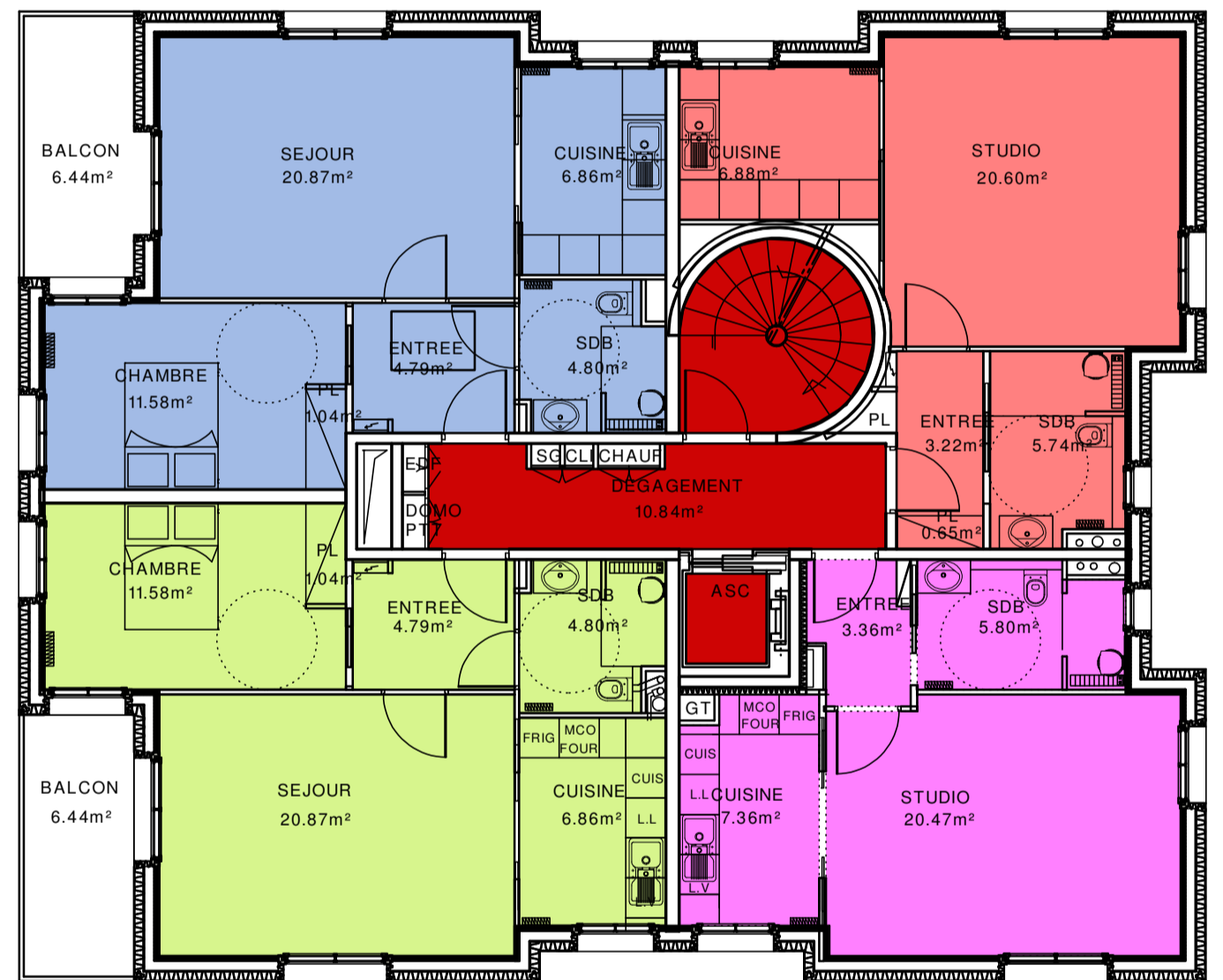
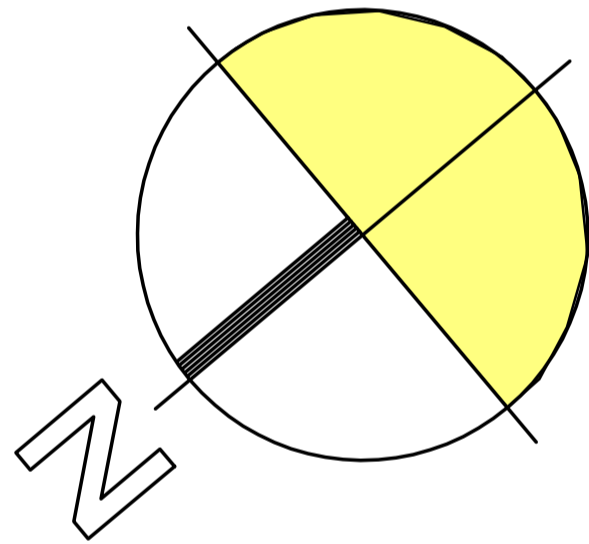
### BATIMENT C



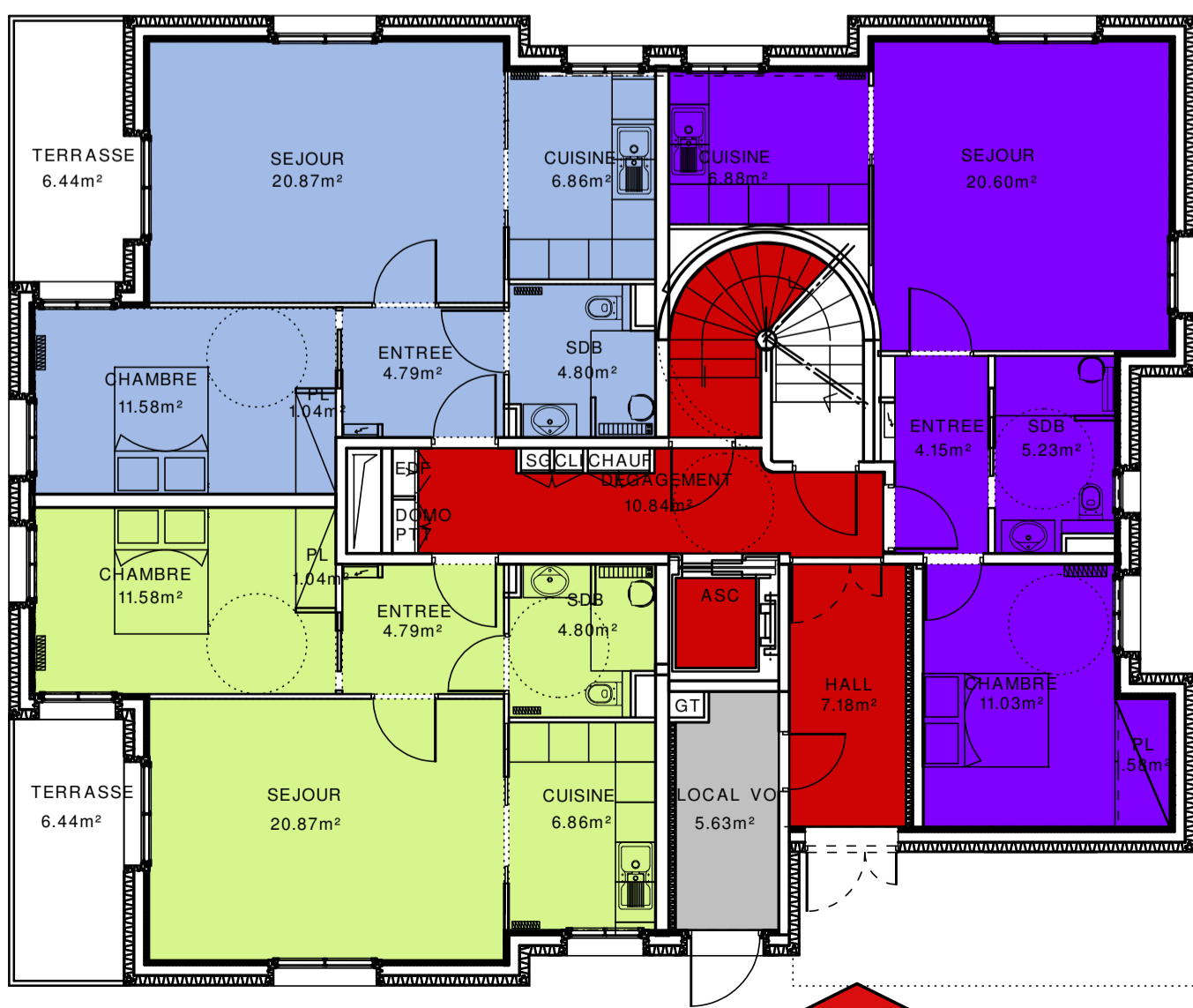
#### BATIMENT C

##### LEGENDES

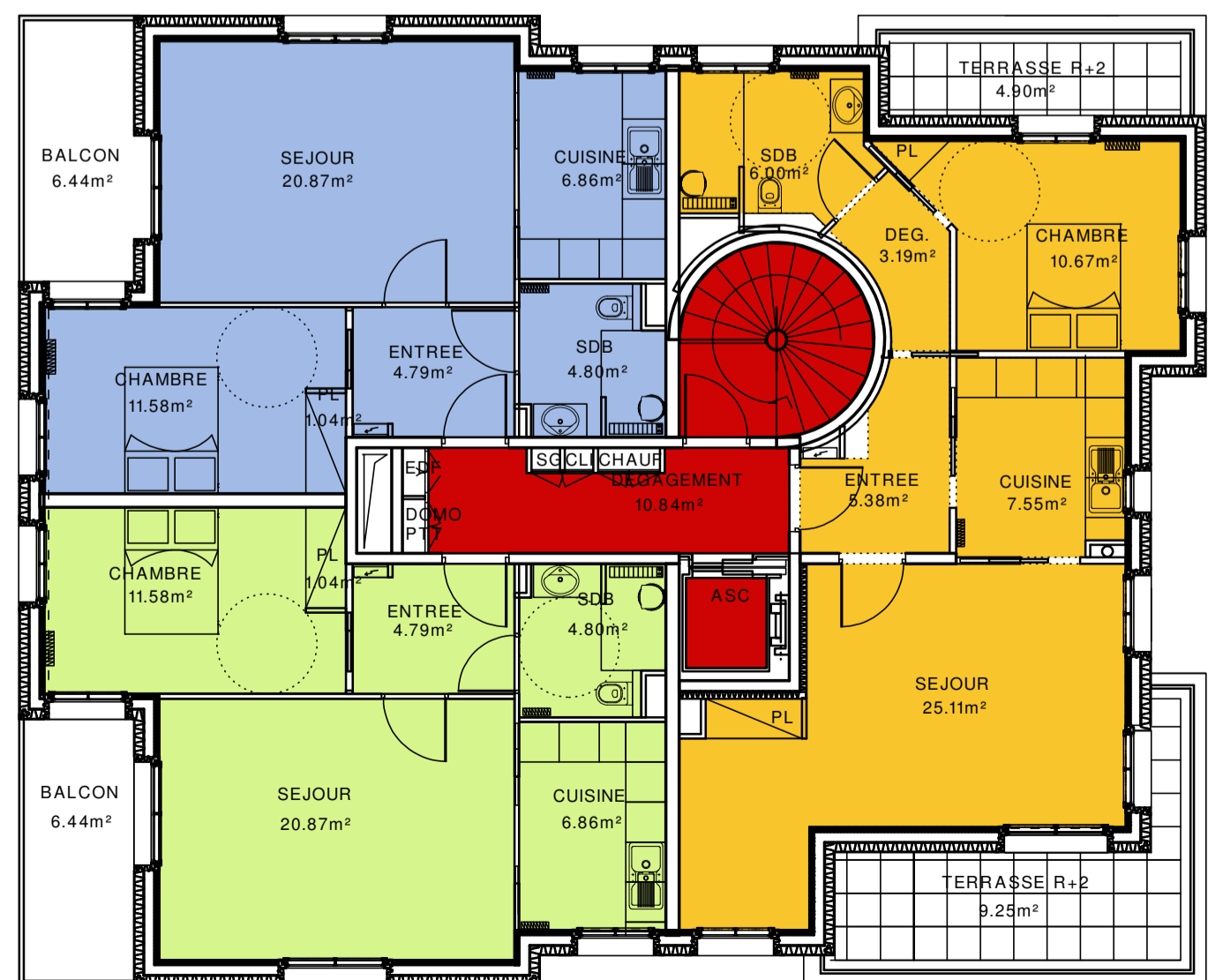
- CIRCULATIONS COMMUNES
- LOCAUX COMMUNS
- LOGEMENT 2 PIECES  
Surface: 49.94m<sup>2</sup> + Balcon: 6.44m<sup>2</sup>
- LOGEMENT 2 PIECES  
Surface: 49.94m<sup>2</sup> + Balcon: 6.44m<sup>2</sup>
- LOGEMENT 2 PIECES  
Surface: 49.47m<sup>2</sup> + Jardin
- LOGEMENT 1 PIECE  
Surface : 37.09m<sup>2</sup>
- LOGEMENT 1 PIECE  
Surface : 36.99m<sup>2</sup>
- LOGEMENT 2 PIECES  
Surface: 57.90m<sup>2</sup> + Terrasses: 14.15m<sup>2</sup>



1ER ETAGE



REZ DE CHAUSSEE



2EME ETAGE