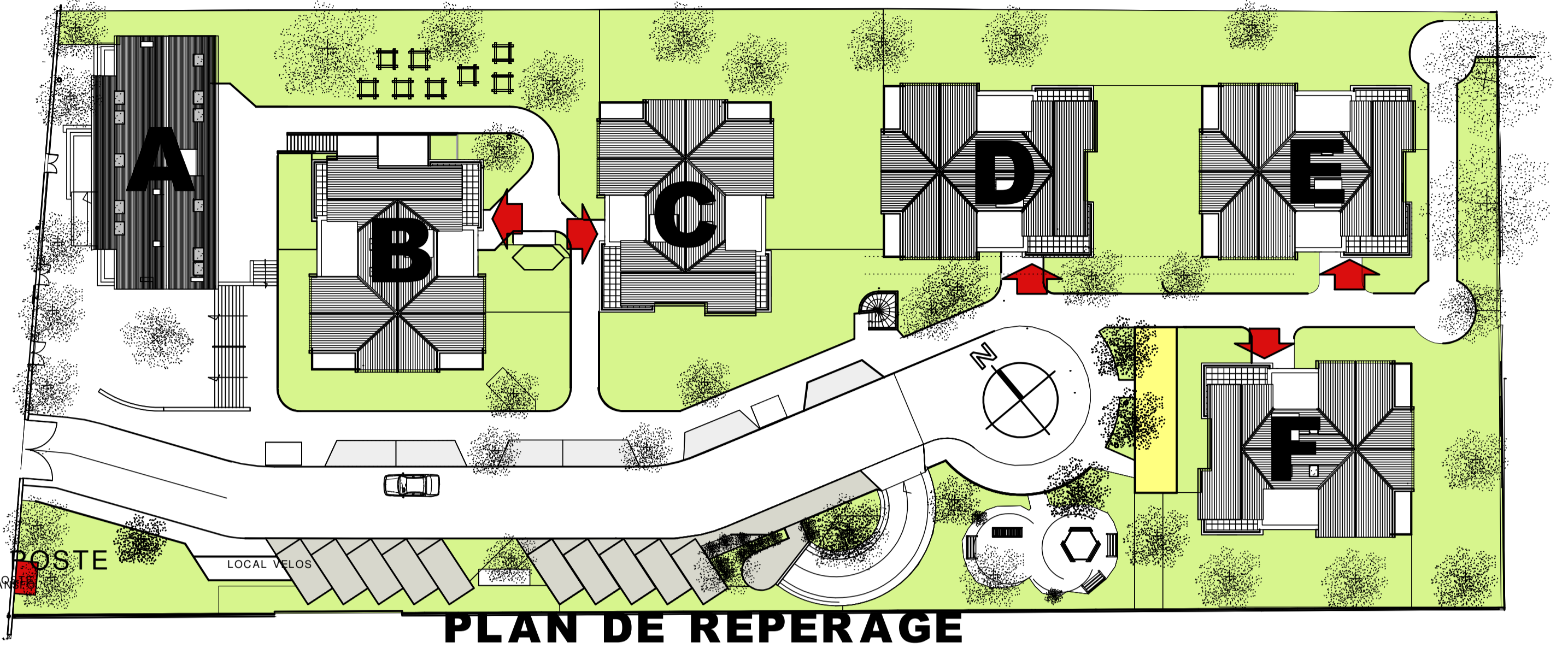


RESIDENCE " LES CLAIES "

15/21, AVENUE PASTEUR - 77410 CLAYE SOUILLY

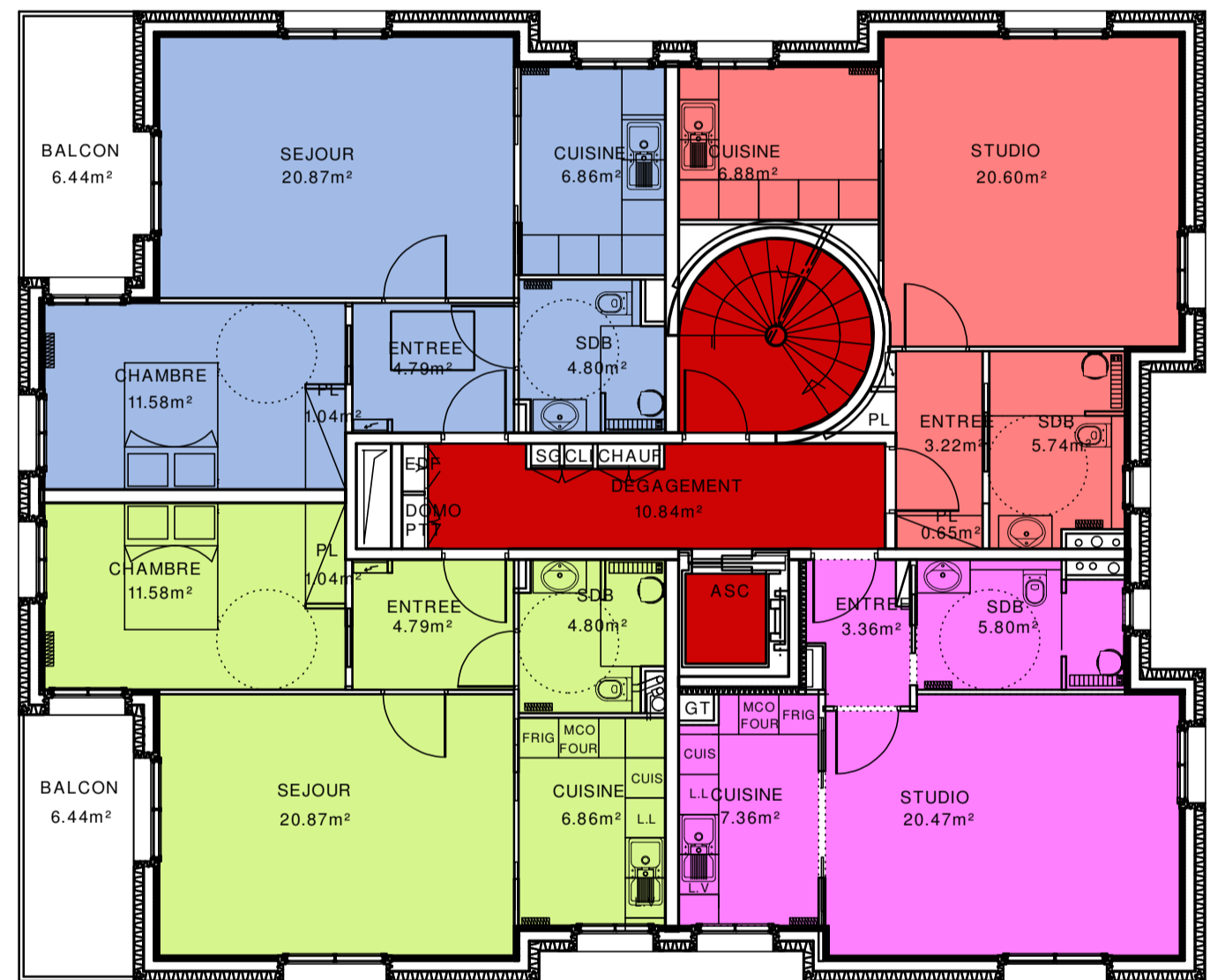
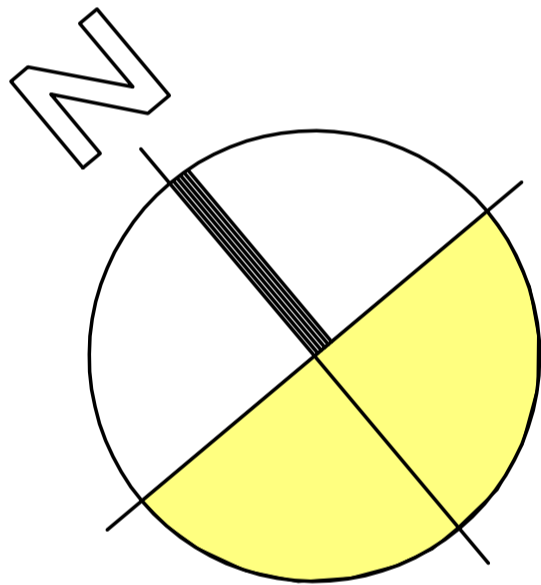
BATIMENTS D et E



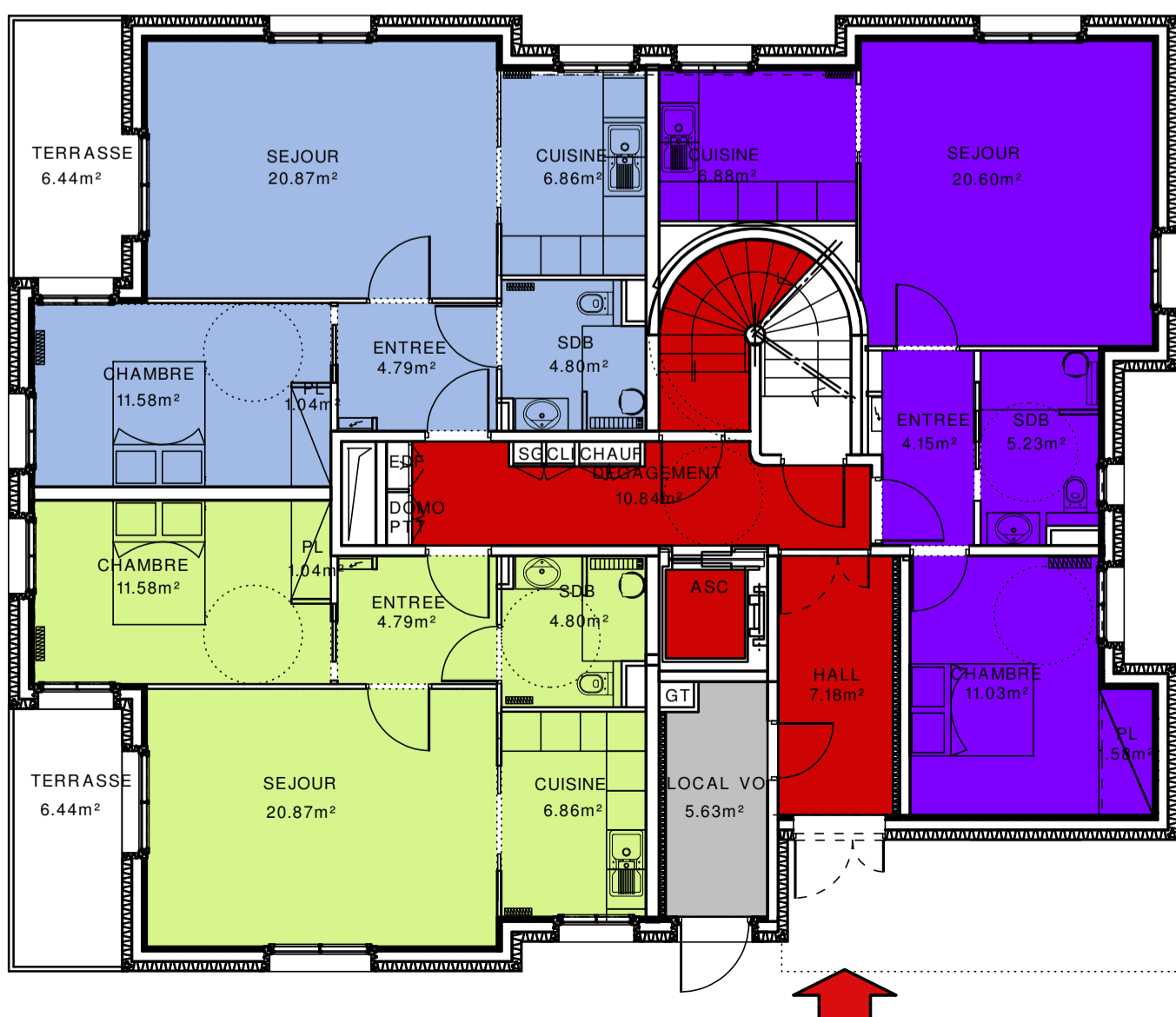
BATIMENTS D et E

LEGENDES

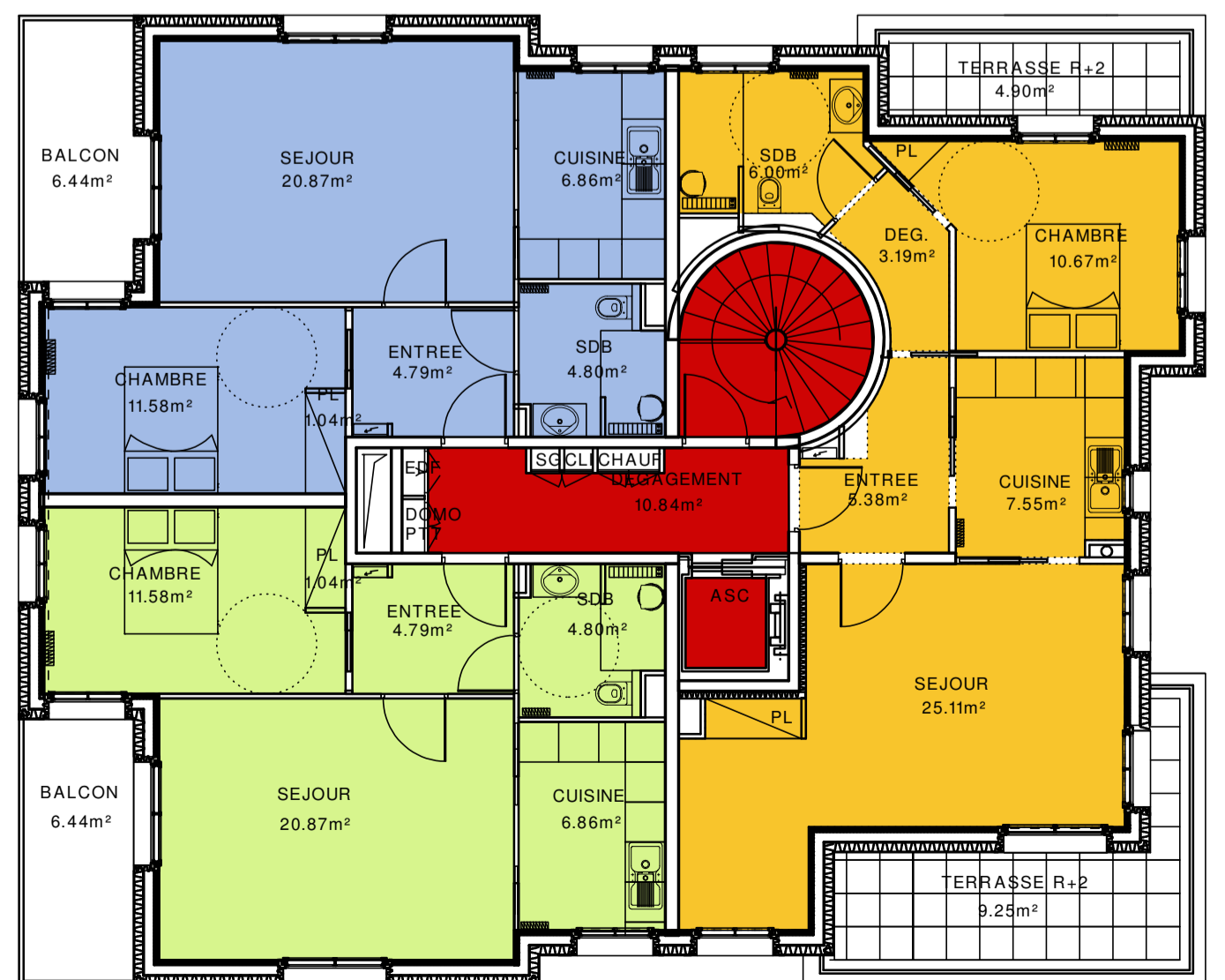
- CIRCULATIONS COMMUNES
- LOCAUX COMMUNS
- LOGEMENT 2 PIECES
Surface: 49.94m² + Balcon: 6.44m²
- LOGEMENT 2 PIECES
Surface: 49.94m² + Balcon: 6.44m²
- LOGEMENT 2 PIECES
Surface: 49.47m² + Jardin
- LOGEMENT 1 PIECE
Surface : 37.09m²
- LOGEMENT 1 PIECE
Surface : 36.99m²
- LOGEMENT 2 PIECES
Surface: 57.90m² + Terrasses: 14.15m²



1ER ETAGE



REZ DE CHAUSSEE



2EME ETAGE